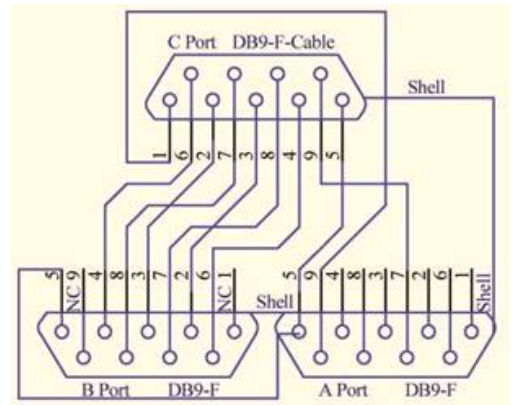


TUM232A - USB RS-232 Converter Tester User Guide

The TUM232A is a USB RS-232 Feedback Tester .The Tester with USB to RS-232 Converter of FTDI Chipset *2 & 1 pc's USB-A Port + DB-9F for external testing USB-RS232 Adapter or Cable. TUM232A is Power free with 7G Pen Driver & Key of TUM232A + Tester tool

TUM232A is 1 port USB downstream port for outside USB to RS-232 converter cable (Port C) Tester.



DB9-F (Port C) connector inside connect Port A & Port B follow:

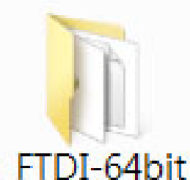
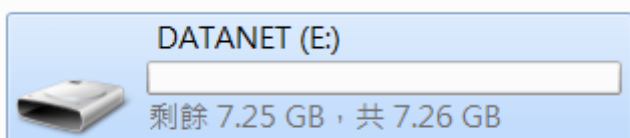
Port C	Signal Name	Error message	Port B	Port A
Main test port	Name	IN/OUT	Test tool Number	Feedback test port
Pin1	DCD	<=IN	7	Pin4
Pin2	RXD	<=IN	2	Pin3
Pin3	TXD	=>OUT	1	Pin2
Pin4	DTR	=>OUT	3	Pin6
Pin5	GND		Pin 5	Pin 5
Pin6	DSR	<=IN	5	Pin4
Pin7	RTS	=>OUT	4	Pin8
Pin8	CTS	<=IN	6	Pin7
Pin9	RI	<=IN	8	Pin7
Shell	GND			

Install TUM232A & tester tool

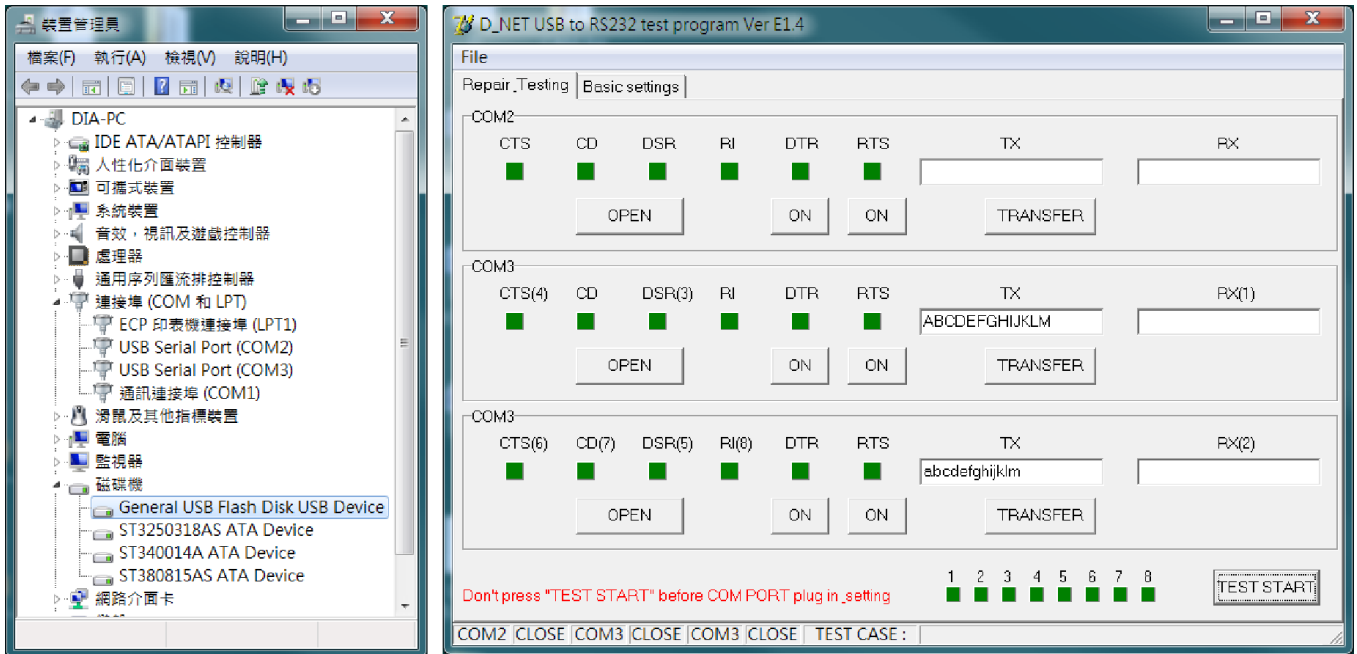
1. Plug in USB cable of TUM232A to PC (With Key / tester program & Driver) =>RED LED LIGHT



2. Fine DATANET Disk & FTDI Driver

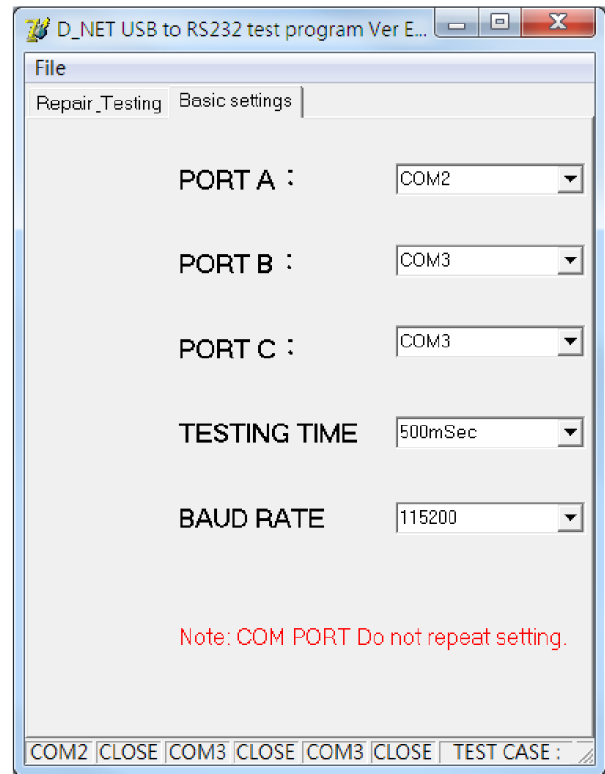
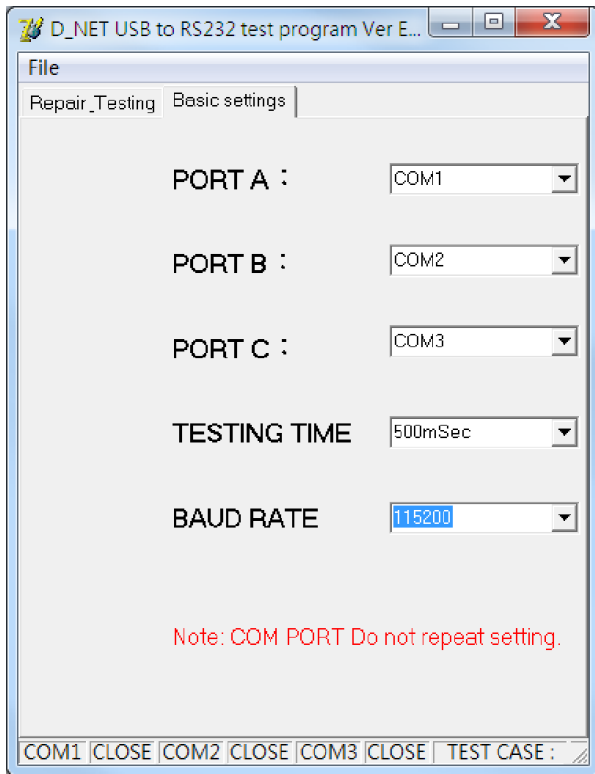


3. Install FTDI VCP Windows Driver.



4. Press “Basic settings” to setting COM ports

Change PORT A/PORT B (See the USB Serial Port (COM X) Setting)

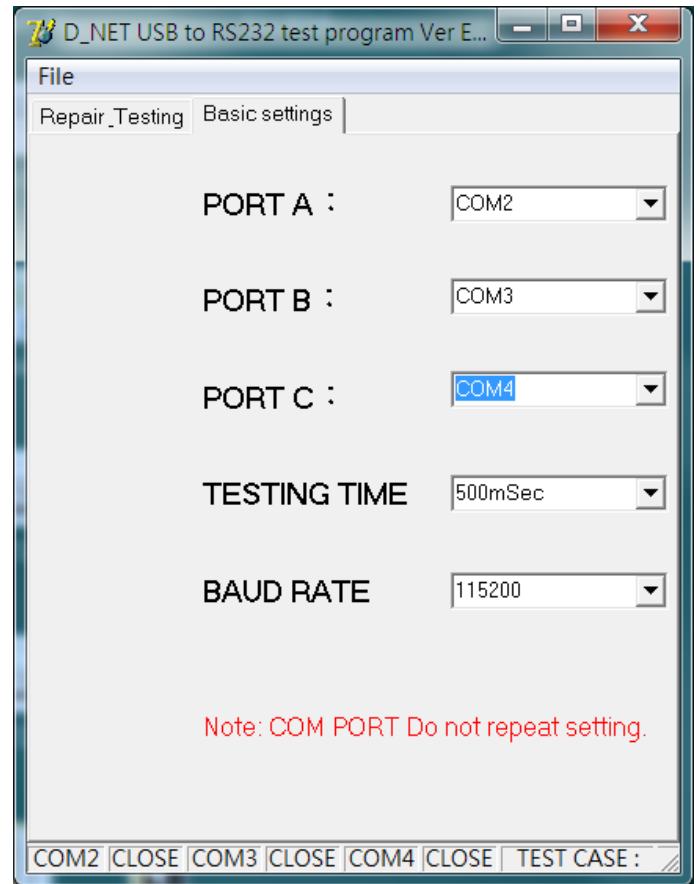
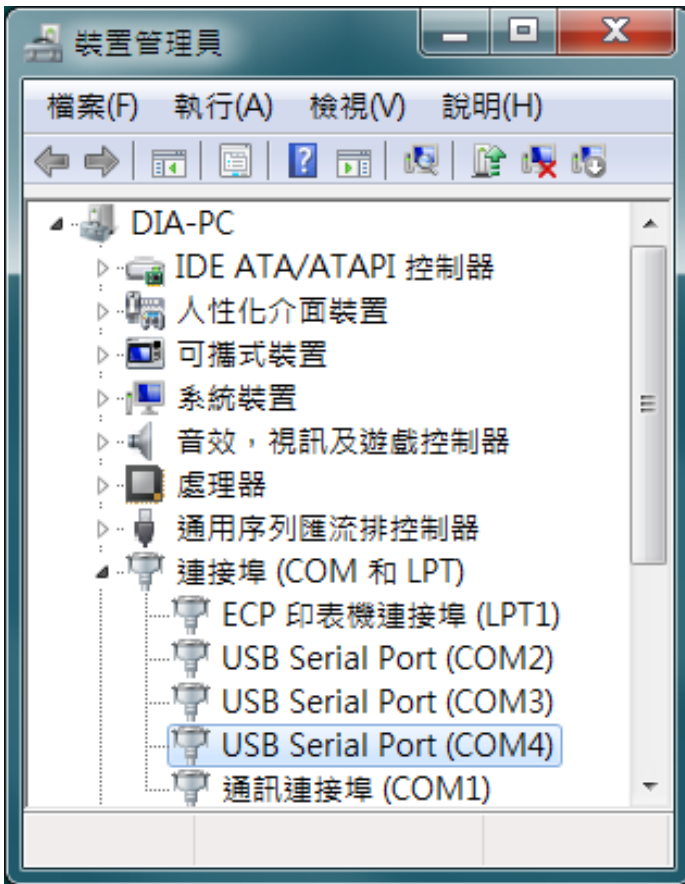


5. Test USB to RS-232 Cable: a. USB-A/M of testing cable to USB-A/F Port of TUM232A b. RS-232 Port (DB9-M) to RS-232 Port (DB9-F) of TUM232A. =>GREEN LED LIGHT

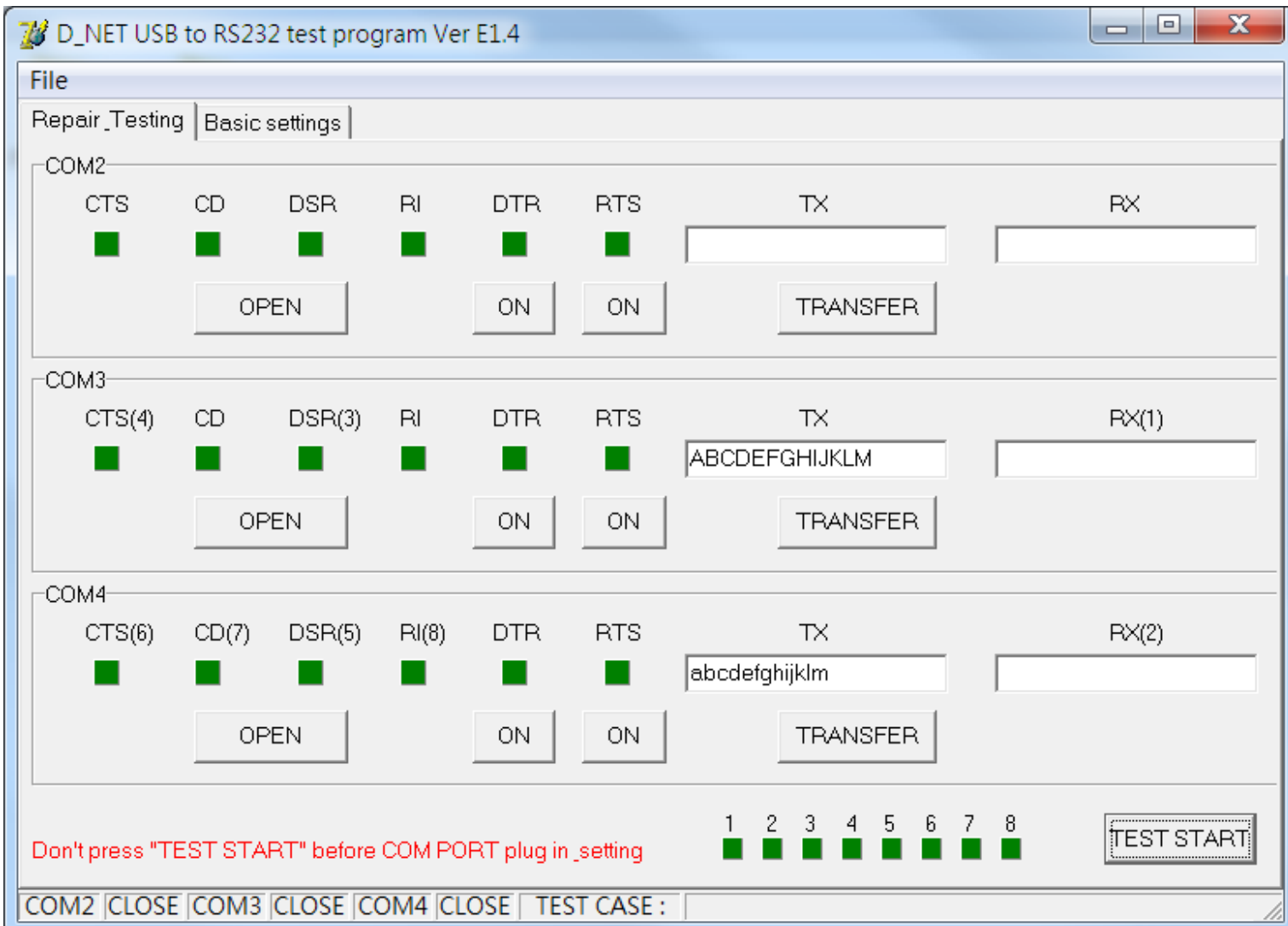
(Note: DB9-M of RS-232 must DTE Mode)



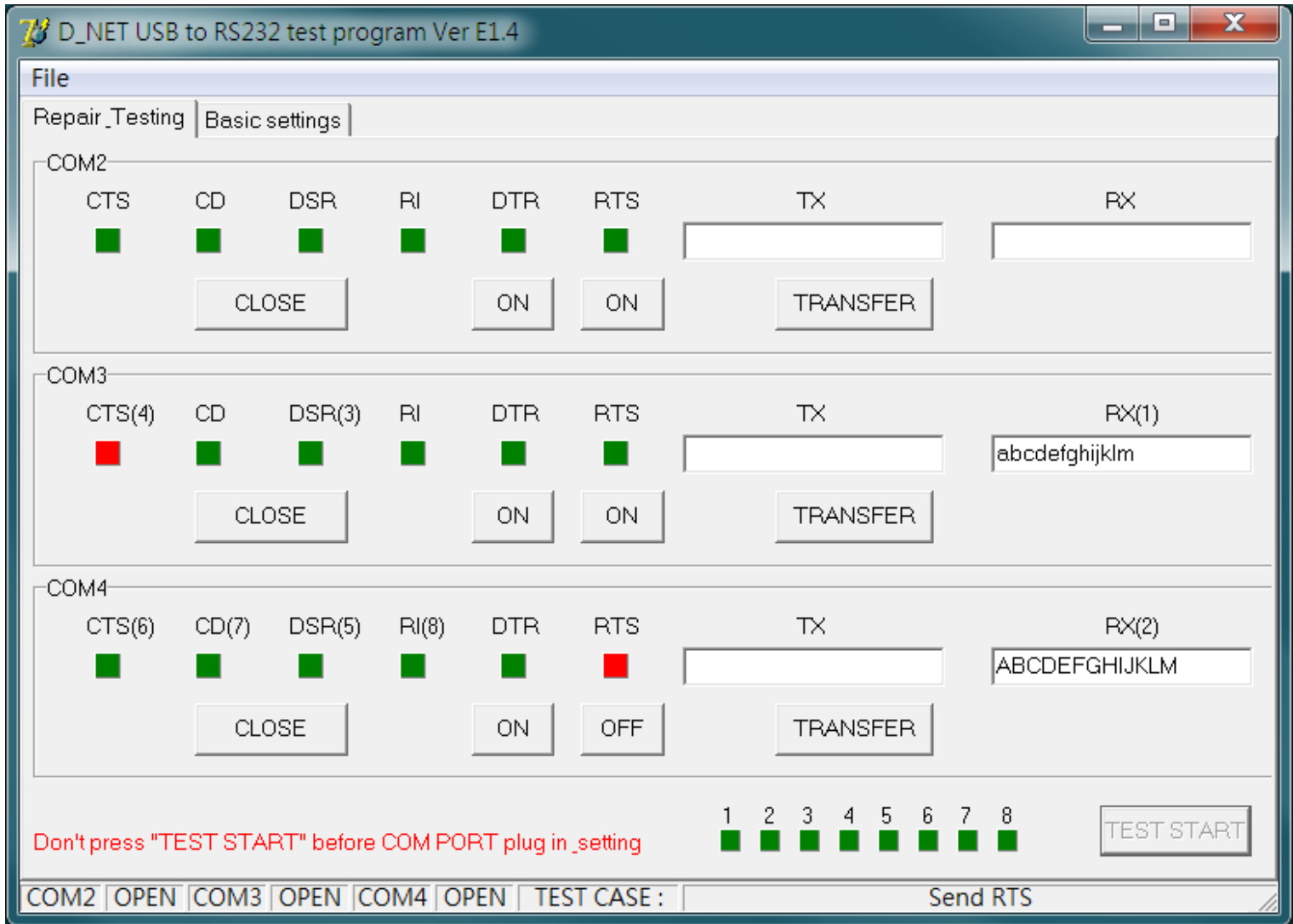
6. Check COM port & Setting



7. Press "Repair_Testing" &



8. Press "TEST START" KEY

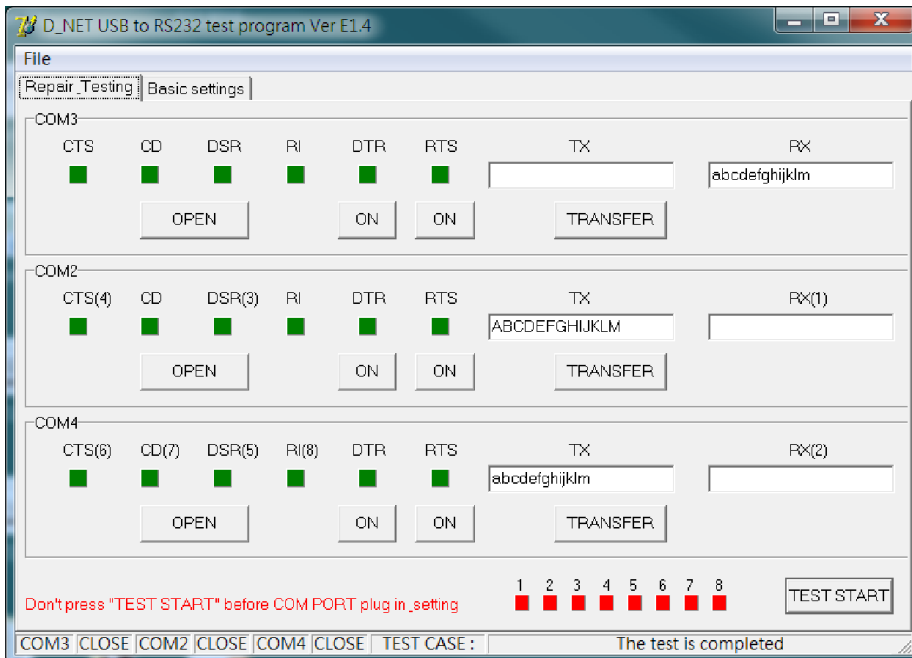


9. Test OK 1~8 LED are Green color (Test error the LED appear RED).

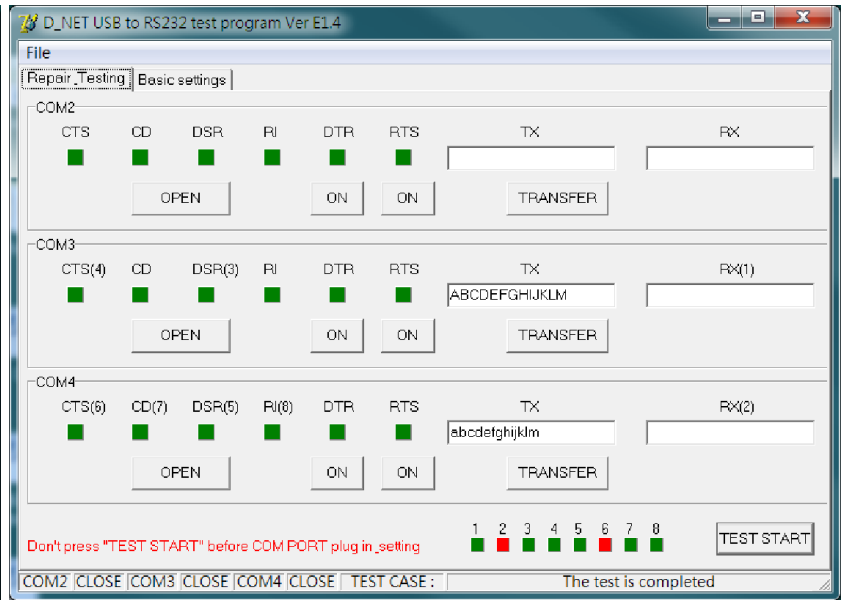
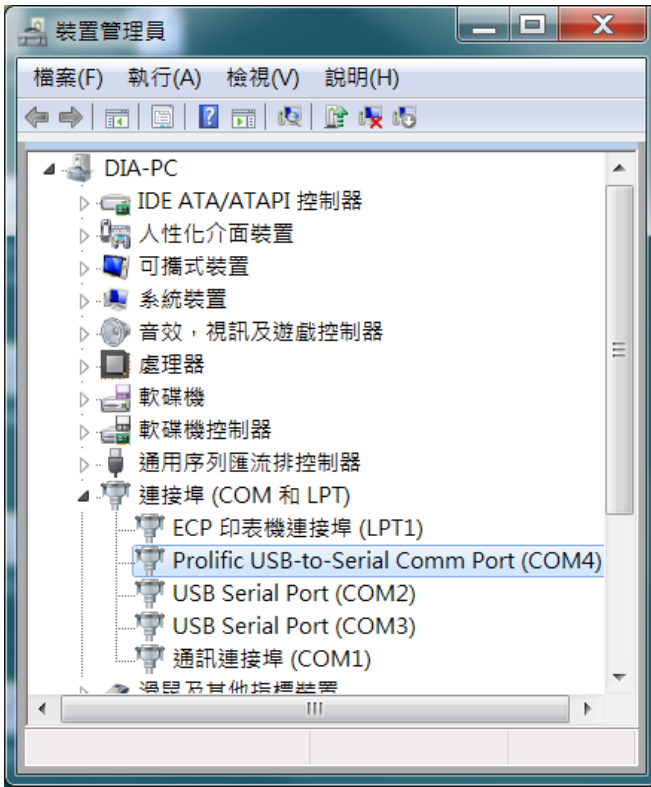
Note: TUM232A Support FTDI all USB to RS-232 Chipset & Adapter if use other Chipset test maybe appear a litter TXD/RXD data loss (Chipset Hardware & Driver compatible bug) but the converter is maybe ok.

Q & A:

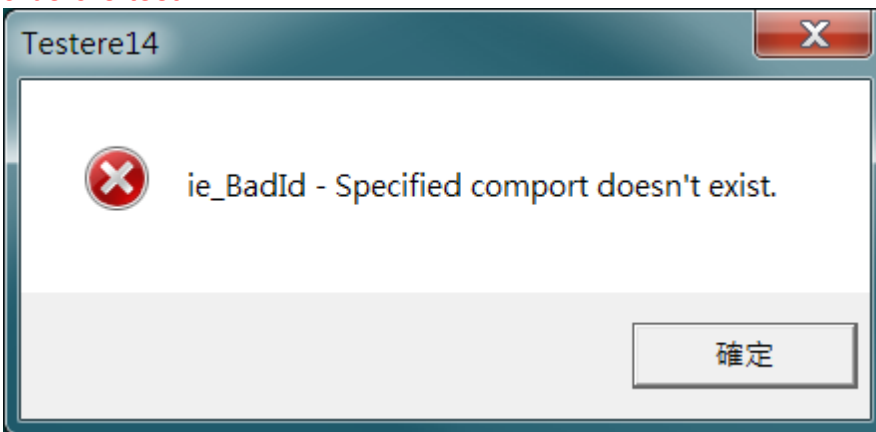
- 1. PORT A / Port B setting Error : COM4 Data transfer to COM3



2. Only data transfer Error: **Chipset Hardware & Driver compatible bug) but the converter is ok**



3. If you're USB to RS-232 Cable with difference serial number, you must change every COMX+1 of PORT 3 before test.



4. (Don't copy the tester program to PC's desk)

